

Etna Elementary

California Department of Education School Accountability Report Card Reported Using Data from the 2016-17 School Year

By February 1 of each year, every school in California is required by state law to publish a School Accountability Report Card (SARC). The SARC contains information about the condition and performance of each California public school. Under the Local Control Funding Formula (LCFF) all local educational agencies (LEAs) are required to prepare a Local Control and Accountability Plan (LCAP), which describes how they intend to meet annual school-specific goals for all pupils, with specific activities to address state and local priorities. Additionally, data reported in an LCAP is to be consistent with data reported in the SARC.

- For more information about SARC requirements, see the California Department of Education (CDE) SARC Web page at <http://www.cde.ca.gov/ta/ac/sa/>.
- For more information about the LCFF or LCAP, see the CDE LCFF Web page at <http://www.cde.ca.gov/fq/aa/lc/>.
- For additional information about the school, parents/guardians and community members should contact the school principal or the district office.

DataQuest

DataQuest is an online data tool located on the [CDE DataQuest Web page](#) that contains additional information about this school and comparisons of the school to the district and the county. Specifically, DataQuest is a dynamic system that provides reports for accountability (e.g., test data, enrollment, high school graduates, dropouts, course enrollments, staffing, and data regarding English learners).

Internet Access

Internet access is available at public libraries and other locations that are publicly accessible (e.g., the California State Library). Access to the Internet at libraries and public locations is generally provided on a first-come, first-served basis. Other use restrictions may include the hours of operation, the length of time that a workstation may be used (depending on availability), the types of software programs available on a workstation, and the ability to print documents.



Mr. Garren Hanon, Principal

Principal, Etna Elementary

About Our School

Etna Elementary is nestled at the base of Etna Mountain, on the south end of the majestic Scott Valley. Etna, California is a small community that is devoted to the success and education of children. School employees, parents and community members work united to sustain a quality setting for all students. Serving students from preschool to 5th grade, instruction and activities are differentiated to meeting the learning needs of all; designing experiences that develop academic, as well as civic understanding.

Contact

Etna Elementary
220 Collier Way
Etna, CA 96027-0490

Phone: 530-467-3320
E-mail: ghanon@svusd.us

About This School

Contact Information (School Year 2017-18)

District Contact Information (School Year 2017-18)	
District Name	Scott Valley Unified
Phone Number	(530) 468-2727
Superintendent	Marie Caldwell
E-mail Address	mcaldwell@svusd.us
Web Site	http://www.svusd.us

School Contact Information (School Year 2017-18)	
School Name	Etna Elementary
Street	220 Collier Way
City, State, Zip	Etna, Ca, 96027-0490
Phone Number	530-467-3320
Principal	Mr. Garren Hanon, Principal
E-mail Address	ghanon@svusd.us
County-District-School (CDS) Code	47764556050728

Last updated: 11/30/2017

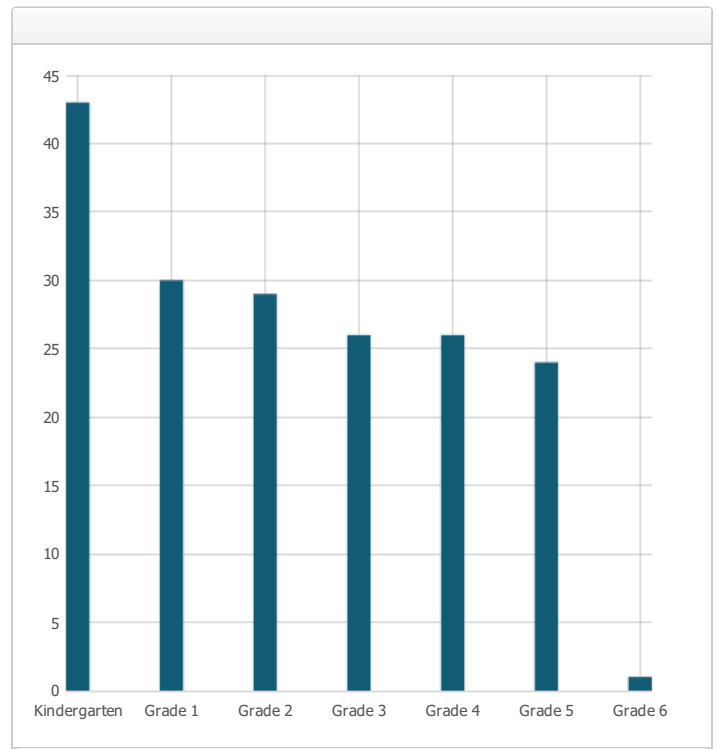
School Description and Mission Statement (School Year 2017-18)

Etna Elementary, established in 1859 has consistently been a leader in academic achievement. The school features a variety of academic programs to foster interests of all students including rigorous academic settings, a multi-faceted theatre arts program, hands-on science, and an outdoor learning center. Classroom teachers work diligently to design lessons aligned with common core standards while preserving high student interest and engagement. The library/media center is equipped to meet the research needs for students as they dive into project based learning. Additionally, the school is on the cutting edge of technology, prepared with a mobile computer lab; a fully equipped media center, in class devices, and a variety of educational software to keep students hands on the devices they need to prepare them for the age in which we live.

Last updated: 11/30/2017

Student Enrollment by Grade Level (School Year 2016-17)

Grade Level	Number of Students
Kindergarten	43
Grade 1	30
Grade 2	29
Grade 3	26
Grade 4	26
Grade 5	24
Grade 6	1
Total Enrollment	179



Last updated: 11/30/2017

Student Enrollment by Student Group (School Year 2016-17)

Student Group	Percent of Total Enrollment
Black or African American	0.0 %
American Indian or Alaska Native	2.8 %
Asian	0.6 %
Filipino	0.0 %
Hispanic or Latino	10.1 %
Native Hawaiian or Pacific Islander	0.6 %
White	68.7 %
Two or More Races	16.8 %
Other	0.4 %
Student Group (Other)	Percent of Total Enrollment
Socioeconomically Disadvantaged	60.3 %
English Learners	2.8 %
Students with Disabilities	4.5 %
Foster Youth	0.6 %

Last updated: 11/30/2017

A. Conditions of Learning

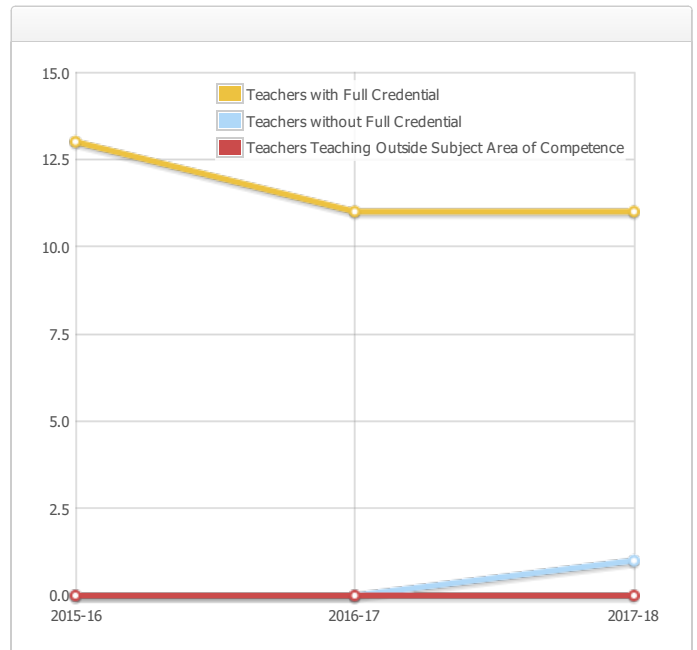
State Priority: Basic

The SARC provides the following information relevant to the State priority: Basic (Priority 1):

- Degree to which teachers are appropriately assigned and fully credentialed in the subject area and for the pupils they are teaching;
- Pupils have access to standards-aligned instructional materials; and
- School facilities are maintained in good repair

Teacher Credentials

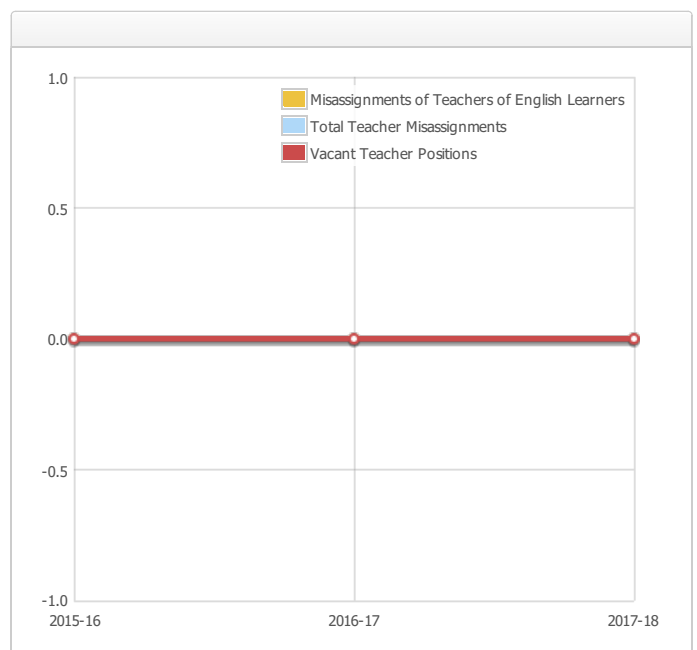
Teachers	School			District
	2015-16	2016-17	2017-18	2017-18
With Full Credential	13	11	11	48
Without Full Credential	0	0	1	2
Teachers Teaching Outside Subject Area of Competence (with full credential)	0	0	0	0



Last updated: 12/21/2017

Teacher Misassignments and Vacant Teacher Positions

Indicator	2015-16	2016-17	2017-18
Misassignments of Teachers of English Learners	0	0	0
Total Teacher Misassignments*	0	0	0
Vacant Teacher Positions	0	0	0



Note: "Misassignments" refers to the number of positions filled by teachers who lack legal authorization to teach that grade level, subject area, student group, etc.

* Total Teacher Misassignments includes the number of Misassignments of Teachers of English Learners.

Last updated: 12/20/2017

Quality, Currency, Availability of Textbooks and Instructional Materials (School Year 2017-18)

Year and month in which the data were collected: September 2017

Subject	Textbooks and Instructional Materials/year of Adoption	From Most Recent Adoption?	Percent Students Lacking Own Assigned Copy
Reading/Language Arts	Pearson, Reading Street	Yes	0.0 %
Mathematics	Go Math	Yes	0.0 %
Science	Full Options Science Systems (FOSS)	No	0.0 %
History-Social Science	Pearson scott Foresman	No	0.0 %
Foreign Language			0.0 %
Health			0.0 %
Visual and Performing Arts			0.0 %
Science Lab Eqpmt (Grades 9-12)	N/A	N/A	0.0 %

Note: Cells with N/A values do not require data.

Last updated: 12/21/2017

School Facility Conditions and Planned Improvements

The school facilities have been maintained in accordance with the five-year deferred maintenance plan.

The Fire Marshall, the Occupational Safety & Health Administration (OSHA), and our liability insurance agency regularly inspect the school. Careful and prompt attention is paid to all recommendations for improvement as deemed by these entities.

Last updated: 11/30/2017

School Facility Good Repair Status

Year and month of the most recent FIT report: November 2017

System Inspected	Rating	Repair Needed and Action Taken or Planned
Systems: Gas Leaks, Mechanical/HVAC, Sewer	Good	
Interior: Interior Surfaces	Good	
Cleanliness: Overall Cleanliness, Pest/Vermin Infestation	Good	
Electrical: Electrical	Good	
Restrooms/Fountains: Restrooms, Sinks/Fountains	Good	
Safety: Fire Safety, Hazardous Materials	Good	
Structural: Structural Damage, Roofs	Good	
External: Playground/School Grounds, Windows/Doors/Gates/Fences	Good	A new playground struture and playground grade woodchips were installed summer 2017

Overall Facility Rate

Year and month of the most recent FIT report: November 2017

Overall Rating	Good
----------------	------

Last updated: 1/5/2018

B. Pupil Outcomes

State Priority: Pupil Achievement

The SARC provides the following information relevant to the State priority: Pupil Achievement (Priority 4):

- **Statewide assessments** (i.e., California Assessment of Student Performance and Progress [CAASPP] System, which includes the Smarter Balanced Summative Assessments for students in the general education population and the California Alternate Assessments [CAAs] for English language arts/literacy [ELA] and mathematics given in grades three through eight and grade eleven. Only eligible students may participate in the administration of the CAAs. CAAs items are aligned with alternate achievement standards, which are linked with the Common Core State Standards [CCSS] for students with the most significant cognitive disabilities); and
- The percentage of students who have successfully completed courses that satisfy the requirements for entrance to the University of California and the California State University, or career technical education sequences or programs of study.

CAASPP Test Results in ELA and Mathematics for All Students

Grades Three through Eight and Grade Eleven (School Year 2016-17)

Subject	Percentage of Students Meeting or Exceeding the State Standards					
	School		District		State	
	2015-16	2016-17	2015-16	2016-17	2015-16	2016-17
English Language Arts / Literacy (grades 3-8 and 11)	41%	42%	44%	50%	48%	48%
Mathematics (grades 3-8 and 11)	39%	45%	46%	48%	36%	37%

Note: Percentages are not calculated when the number of students tested is ten or less, either because the number of students in this category is too small for statistical accuracy or to protect student privacy.

Last updated: 12/20/2017

CAASPP Test Results in ELA by Student Group**Grades Three through Eight and Grade Eleven (School Year 2016-17)**

Student Group	Total Enrollment	Number Tested	Percent Tested	Percent Met or Exceeded
All Students	79	76	96.20%	42.11%
Male	43	41	95.35%	34.15%
Female	36	35	97.22%	51.43%
Black or African American				
American Indian or Alaska Native	--	--	--	
Asian	--	--	--	
Filipino				
Hispanic or Latino	--	--	--	
Native Hawaiian or Pacific Islander				
White	56	53	94.64%	50.94%
Two or More Races	13	13	100.00%	15.38%
Socioeconomically Disadvantaged	46	45	97.83%	33.33%
English Learners	--	--	--	
Students with Disabilities	--	--	--	
Students Receiving Migrant Education Services				
Foster Youth	--	--	--	--

Note: ELA test results include the Smarter Balanced Summative Assessment and the CAA. The "Percent Met or Exceeded" is calculated by taking the total number of students who met or exceeded the standard on the Smarter Balanced Summative Assessment plus the total number of students who met the standard (i.e., achieved Level 3--Alternate) on the CAAs divided by the total number of students who participated in both assessments.

Note: Double dashes (--) appear in the table when the number of students is ten or less, either because the number of students in this category is too small for statistical accuracy or to protect student privacy.

Note: The number of students tested includes all students who participated in the test whether they received a score or not; however, the number of students tested is not the number that was used to calculate the achievement level percentages. The achievement level percentages are calculated using only students who received scores.

Last updated: 12/20/2017

CAASPP Test Results in Mathematics by Student Group**Grades Three through Eight and Grade Eleven (School Year 2016-17)**

Student Group	Total Enrollment	Number Tested	Percent Tested	Percent Met or Exceeded
All Students	79	76	96.20%	44.74%
Male	43	41	95.35%	43.90%
Female	36	35	97.22%	45.71%
Black or African American				
American Indian or Alaska Native	--	--	--	
Asian	--	--	--	
Filipino				
Hispanic or Latino	--	--	--	
Native Hawaiian or Pacific Islander				
White	56	53	94.64%	52.83%
Two or More Races	13	13	100.00%	15.38%
Socioeconomically Disadvantaged	46	45	97.83%	33.33%
English Learners	--	--	--	
Students with Disabilities	--	--	--	
Students Receiving Migrant Education Services				
Foster Youth	--	--	--	--

Note: Mathematics test results include the Smarter Balanced Summative Assessment and the CAA. The "Percent Met or Exceeded" is calculated by taking the total number of students who met or exceeded the standard on the Smarter Balanced Summative Assessment plus the total number of students who met the standard (i.e., achieved Level 3--Alternate) on the CAAs divided by the total number of students who participated in both assessments.

Note: Double dashes (--) appear in the table when the number of students is ten or less, either because the number of students in this category is too small for statistical accuracy or to protect student privacy.

Note: The number of students tested includes all students who participated in the test whether they received a score or not; however, the number of students tested is not the number that was used to calculate the achievement level percentages. The achievement level percentages are calculated using only students who received scores.

Last updated: 12/20/2017

CAASPP Test Results in Science for All Students**Grades Five, Eight and Ten**

Subject	Percentage of Students Scoring at Proficient or Advanced					
	School		District		State	
	2014-15	2015-16	2014-15	2015-16	2014-15	2015-16
Science (grades 5, 8, and 10)	83.0%	66.0%	69.0%	69.0%	56%	54%

Note: Science test results include California Standards Tests (CSTs), California Modified Assessment (CMA), and California Alternate Performance Assessment (CAPA) in grades five, eight, and ten.

Note: Scores are not shown when the number of students tested is ten or less, either because the number of students in this category is too small for statistical accuracy or to protect student privacy.

Note: The 2016-17 data are not available. The California Department of Education is developing a new science assessment based on the Next Generation Science Standards for California Public Schools (CA NGSS). The new California Science Test (CAST) was piloted in spring 2017. The CST and CMA for Science will no longer be administered.

Last updated: 12/20/2017

State Priority: Other Pupil Outcomes

The SARC provides the following information relevant to the State priority: Other Pupil Outcomes (Priority 8):

- Pupil outcomes in the subject area of physical education

California Physical Fitness Test Results (School Year 2016-17)

Grade Level	Percentage of Students Meeting Fitness Standards		
	Four of Six Fitness Standards	Five of Six Fitness Standards	Six of Six Fitness Standards

Note: Percentages are not calculated when the number of students tested is ten or less, either because the number of students in this category is too small for statistical accuracy or to protect student privacy.

Last updated: 12/20/2017

C. Engagement

State Priority: Parental Involvement

The SARC provides the following information relevant to the State priority: Parental Involvement (Priority 3):

- Efforts the school district makes to seek parent input in making decisions for the school district and each schoolsite

Opportunities for Parental Involvement (School Year 2017-18)

Parental involvement is a hallmark of Etna Elementary School. These scheduled volunteers support with everything from reading groups and aid in teacher preparation, to the orchestration of school wide activities that support student learning and a positive school culture. Just a few opportunities for parents include participation in the PTO, Site Council, classroom support, field trip group leaders and SAFE volunteers. Parents’ input is solicited in a variety of fashions including take home surveys, site council participation and an open door and ear from site administration.

State Priority: Pupil Engagement

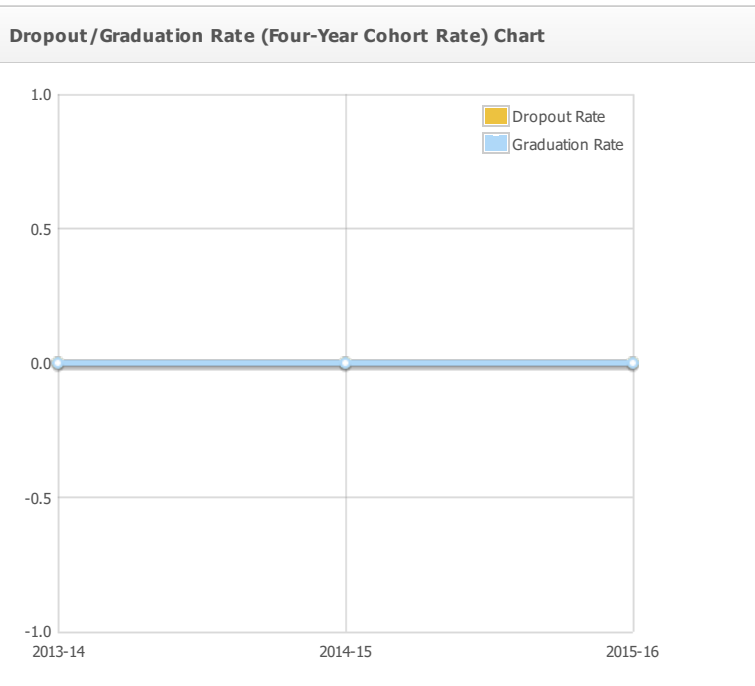
Last updated: 11/30/2017

The SARC provides the following information relevant to the State priority: Pupil Engagement (Priority 5):

- High school dropout rates; and
- High school graduation rates

Dropout Rate and Graduation Rate (Four-Year Cohort Rate)

Indicator	School			District			State		
	2013-14	2014-15	2015-16	2013-14	2014-15	2015-16	2013-14	2014-15	2015-16
Dropout Rate	0.0%	0.0%	0.0%	0.0%	0.0%	0.0%	11.5%	10.7%	9.7%
Graduation Rate	0.0%	0.0%	0.0%	96.0%	89.1%	100.0%	81.0%	82.3%	83.8%



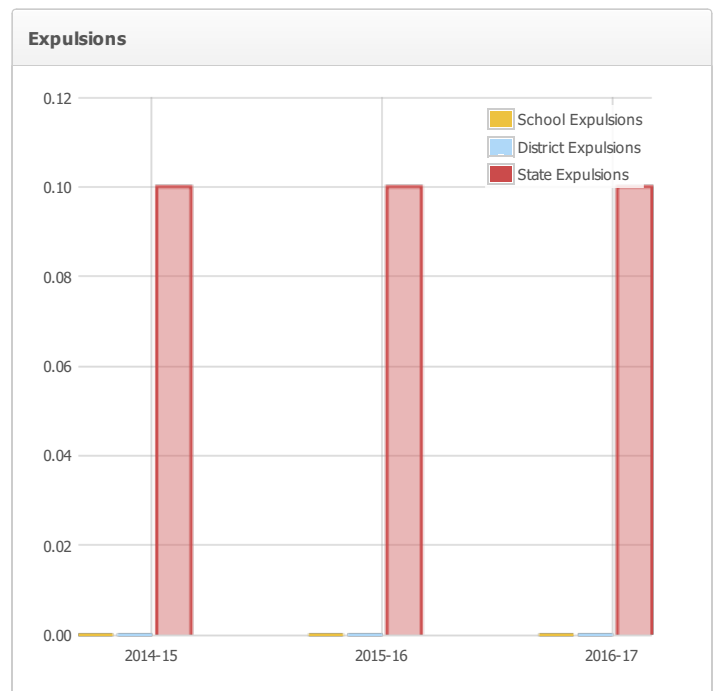
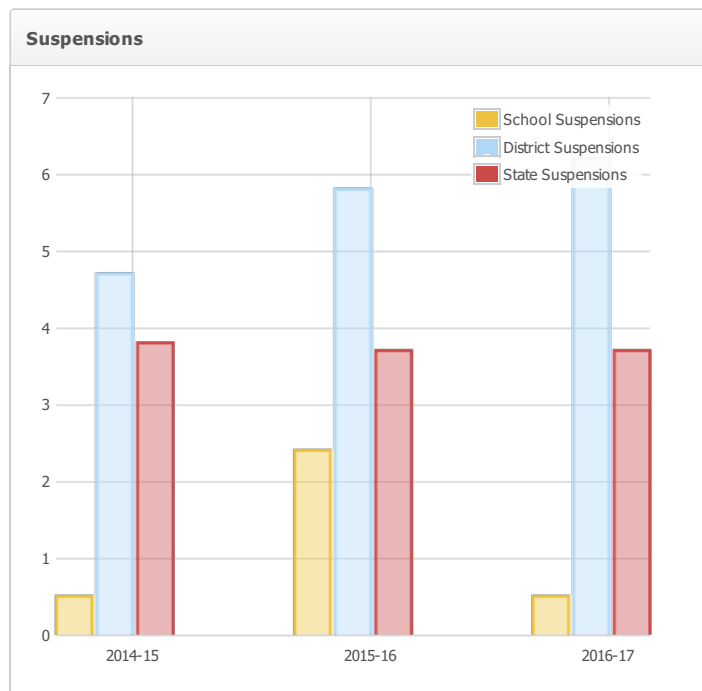
State Priority: School Climate

The SARC provides the following information relevant to the State priority: School Climate (Priority 6):

- Pupil suspension rates;
- Pupil expulsion rates; and
- Other local measures on the sense of safety

Suspensions and Expulsions

Rate	School			District			State		
	2014-15	2015-16	2016-17	2014-15	2015-16	2016-17	2014-15	2015-16	2016-17
Suspensions	0.5%	2.4%	0.5%	4.7%	5.8%	6.2%	3.8%	3.7%	3.7%
Expulsions	0.0%	0.0%	0.0%	0.0%	0.0%	0.0%	0.1%	0.1%	0.1%



Last updated: 12/20/2017

School Safety Plan (School Year 2017-18)

Etna Elementary School provides a safe, clean environment for students, staff, and volunteers. A team of custodians ensures classrooms, restrooms, and campus grounds are kept clean and safe. A scheduled maintenance program is administered by the Scott Valley Unified School District to ensure that all classrooms and facilities are well maintained. The school is in compliance with laws, rules and regulations pertaining to hazardous materials and state earthquake standards. The school's Disaster Preparedness Plan includes steps for ensuring student and staff safety during a disaster and is coordinated with community services agencies. Fire and disaster drills are conducted on a regular basis throughout the school year. Members of the Safety Plan Committee revise the School Site Safety Plan annually.

Last updated: 1/5/2018

D. Other SARC Information

The information in this section is required to be in the SARC but is not included in the state priorities for LCFF.

Federal Intervention Program (School Year 2017-18)

Indicator	School	District
Program Improvement Status	Not in PI	Not in PI
First Year of Program Improvement		
Year in Program Improvement		
Number of Schools Currently in Program Improvement	N/A	1
Percent of Schools Currently in Program Improvement	N/A	25.0%

Last updated: 11/30/2017

Average Class Size and Class Size Distribution (Elementary)

Grade Level	2014-15				2015-16				2016-17			
	Average Class Size	Number of Classes *			Average Class Size	Number of Classes *			Average Class Size	Number of Classes *		
		1-20	21-32	33+		1-20	21-32	33+		1-20	21-32	33+
K	17.0	2	0	0	20.0	1	1	0	22.0	1	1	0
1	26.0	0	1	0	17.0	2	0	0	30.0	0	1	0
2	23.0	0	1	0	23.0	0	1	0	14.0	2	0	0
3	23.0	0	1	0	21.0	0	1	0	26.0	0	1	0
4	21.0	1	1	0	26.0	0	1	0	26.0	0	1	0
5	30.0	0	1	0	19.0	2	0	0	24.0	0	1	0
6	0.0	0	0	0	0.0	0	0	0	0.0	0	0	0
Other	0.0	0	0	0	0.0	0	0	0	0.0	0	0	0

* Number of classes indicates how many classes fall into each size category (a range of total students per class).

Last updated: 12/20/2017

Academic Counselors and Other Support Staff (School Year 2016-17)

Title	Number of FTE* Assigned to School	Average Number of Students per Academic Counselor
Academic Counselor		
Counselor (Social/Behavioral or Career Development)		N/A
Library Media Teacher (Librarian)		N/A
Library Media Services Staff (Paraprofessional)	0.5	N/A
Psychologist		N/A
Social Worker		N/A
Nurse		N/A
Speech/Language/Hearing Specialist		N/A
Resource Specialist (non-teaching)		N/A
Other		N/A

Note: Cells with N/A values do not require data.

*One Full Time Equivalent (FTE) equals one staff member working full time; one FTE could also represent two staff members who each work 50 percent of full time.

Last updated: 12/20/2017

Expenditures Per Pupil and School Site Teacher Salaries (Fiscal Year 2015-16)

Level	Total Expenditures Per Pupil	Expenditures Per Pupil (Restricted)	Expenditures Per Pupil (Unrestricted)	Average Teacher Salary
School Site	\$12874.6	\$2944.1	\$9930.5	\$54933.0
District	N/A	N/A	\$9930.5	\$54933.0
Percent Difference – School Site and District	N/A	N/A	0.0%	0.0%
State	N/A	N/A	\$6574.0	\$62381.0
Percent Difference – School Site and State	N/A	N/A	40.7%	-12.7%

Note: Cells with N/A values do not require data.

Last updated: 12/21/2017

Types of Services Funded (Fiscal Year 2016-17)

In addition to general fund state funding, Etna Elementary School receives state and federal categorical funding for special programs, which include the following categorical, special education, and support programs:

- Title I, Part A
- Title II Teacher Quality
- Title VI Indian Education
- After School Tutoring

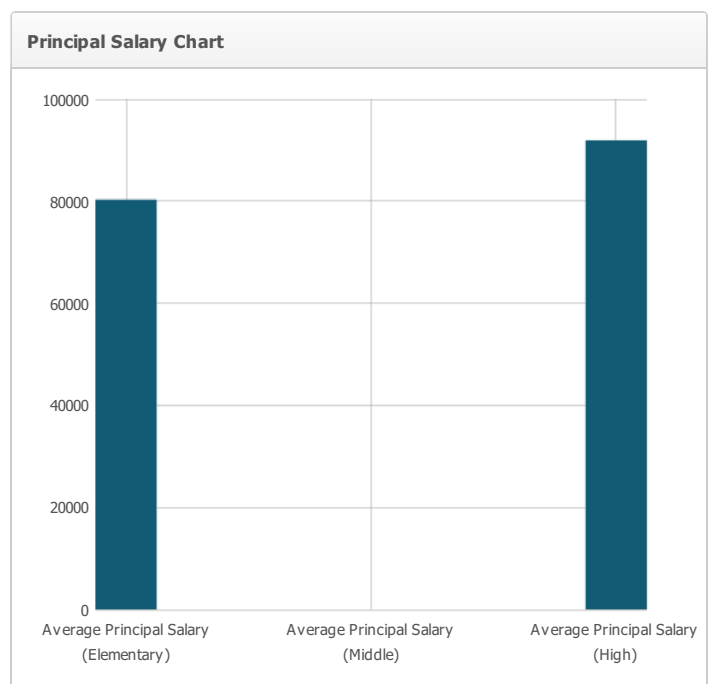
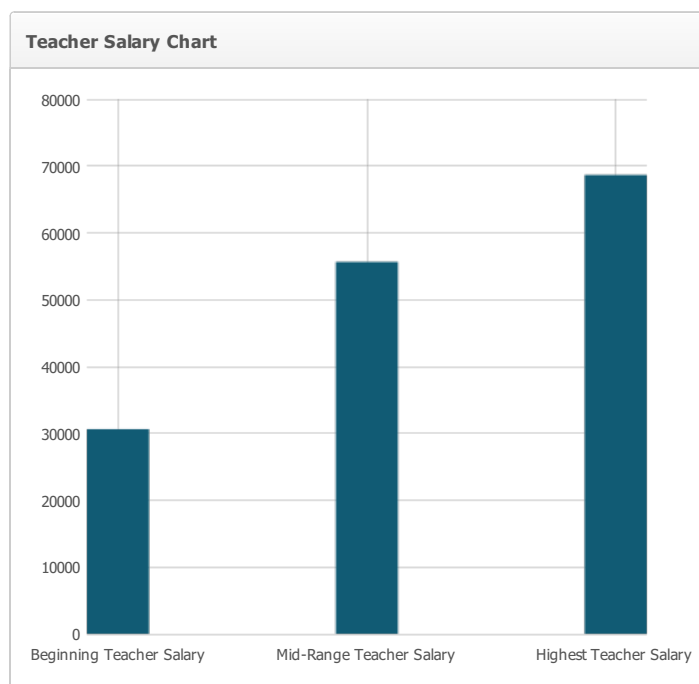
Etna Elementary provides various supplemental services to support all students. These supplemental services include: Reading Academy for at-risk readers, English Language Development, iPass mathematics intervention program, Universal Access during reading/language arts, paraprofessional support for inclusion students and at-risk students, and counseling.

Last updated: 11/16/2017

Teacher and Administrative Salaries (Fiscal Year 2015-16)

Category	District Amount	State Average For Districts In Same Category
Beginning Teacher Salary	\$30,634	\$41,164
Mid-Range Teacher Salary	\$55,648	\$61,818
Highest Teacher Salary	\$68,658	\$84,567
Average Principal Salary (Elementary)	\$80,301	\$96,125
Average Principal Salary (Middle)	\$	\$103,336
Average Principal Salary (High)	\$91,931	\$101,955
Superintendent Salary	\$144,138	\$126,855
Percent of Budget for Teacher Salaries	29.0%	32.0%
Percent of Budget for Administrative Salaries	6.0%	6.0%

For detailed information on salaries, see the CDE Certificated Salaries & Benefits Web page at <http://www.cde.ca.gov/ds/fd/cs/>.



Last updated: 12/21/2017

Professional Development

Professional development is an ongoing focus at the school; teachers continue to learn and improve, just as students do. Staff members build teaching skills by participating in many conferences, courses, and workshops throughout the year and then sharing their experiences and knowledge with their colleagues. The district offers staff development days. Staff development topics included:

- Standards Based Curriculum
- Developing benchmark tests
- Using data to drive instruction
- Intervention strategies including differentiation
- Writing across the curriculum using Step Up to Writing
- Elementary learning target implementation
- Math instructional collaboration
- Development of elementary writing agreements
- Positive Behavior Interventions & Supports (PBIS)

Last updated: 11/30/2017