

DRAFT DRAFT DRAFT DRAFT DRAFT DRAFT DRAFT DRAFT DRAFT DRAFT DRAFT DRAFT



Re-Opening Plan for Fall 2020

Return to School Framework

Adapted for Scott Valley Unified School District from the California Department of Public Health

Subject to Change Based on New Information and Changes to State and/or Local Requirements

Adopted by the Scott Valley Unified School District Board of Trustees on / / 2020

CONTEXT

The Scott Valley Unified School District recognizes the unique and distinctive conditions shaping return-to-school opportunities and challenges accompanying the 2020-2021 school year. Our District's response to COVID-19 is grounded in evidence-based processes and practices unique to our context. As county conditions change, we may adapt our protocols to address the challenges and opportunities generated by such variation.

The trials posed by COVID-19, and the duration of this threat, may make it more difficult for districts to make uniform decisions. Scott Valley Unified School District remains committed to working with state and local public health agencies to ensure continuity of education. While conditions related to regional variation may change, we are unwavering in our promise to students, families, and staff. In anticipation that conditions are likely to change, this Framework should be considered a 'living document' that will be updated in accordance with federal, state and local guidance.

With input from the Return-to-School Task Force and by recommendation of the superintendent, on August 10, 2020, the Board of Trustees of the Scott Valley Unified School District adopted the instructional models for the Fall 2020 school year. Two factors serve as the foundation for making this decision:

- Siskiyou County is not and has not been on the state's monitoring list and
- Senate Bill 98 (SB 98) enacted July 1, 2020 (Education Code Section 43502, 43503, and 43504) authorizes Districts to determine their instructional model(s).

Though SB 98 is a budget bill, it includes requirements regarding in-person instruction and distance learning. Namely, SB 98 states that school districts must offer in-person instruction, to the greatest extent possible, and allows school districts to offer distance learning or a hybrid model. Scott Valley Unified School District will return to school in Fall 2020 with two instructional models offered for students:

- 1) In-person instruction, to the greatest extent possible
- 2) Distance learning

Implementation of this Framework will depend on local public health conditions, including those listed [here](#).

Scott Valley Unified School District engaged teachers and families of the Return-to-School Task Force, labor partners, and other relevant stakeholders in the school community to formulate and implement plans that consider the following:

- **Student, Family and Staff Population:** Who are the student, family and staff populations who will be impacted by or can serve as partners in implementing any of the following measures?
- **Ability to Implement or Adhere to Measures:** Do staff, students and families have the tools, information, resources and ability to successfully adhere to or implement the new measures?
- **Negative or Unintended Consequences:** Are there any negative or unintended consequences of implementing the measures and how can those be mitigated?

SCOTT VALLEY UNIFIED SCHOOL DISTRICT GUIDING PRINCIPLES

- ❖ The safety, health and well-being of students, teachers, and staff remains a priority.
- ❖ Transitioning to a completely online learning environment in spring 2020 was exacerbated by increased parental burden and pressure, student stress, food insecurity, isolation from other caring adults and peers, and limited or non-existent extra-curricular activities and competitions.
- ❖ Access to healthy foods and opportunities to participate in physical activity are imperative to helping to reduce the risks of severe social emotional distress, illness, and desperation.
- ❖ Teachers, principals, and school/district staff are considered essential workers.
- ❖ Students deserve to be known by a caring school adult by name, by need, by skill and to have access to and interact with their teachers, peers, support staff, and principals.
- ❖ Though perspectives vary and solutions are imperfect and continue to evolve, we share the common goal of supporting our children to thrive.

The headings and language of this document are intended to mirror the guidance outlined in the industry guidance for Schools and School-Based Programs from the California Department of Public Health (August 3, 2020).

The California Department of Public Health and California Department of Education documents should be used as a reference for guidance on matters not addressed in this Framework. As changes are made by the authorizing Departments, the updated language will take precedence over this Framework.



1. General Measures

A relationship of communication with local and state authorities is well established to determine current disease levels and control measures in our community.

- Review and refer to the relevant county variance documentation (Attached).
- Consultation with our county health officer, or designated staff, is on-going to monitor and provide advice on local conditions.
- We collaborate with other schools and school partners in our region, including the county office of education.
- Updated guidance from state agencies is regularly reviewed.
- An addendum to our Injury and Illness Prevention Program (IIPP) specific to COVID-19 is established.
- The [CDPH Guidance](#) for the Use of Face Coverings is incorporated into this Framework.
- Train and communicate with employee representatives on the plan. Make the written plan available and accessible to employee representatives.
- Regularly evaluate the workplace for compliance with the plan and document and correct deficiencies identified.
- Investigate any COVID-19 illness and determine if any work-related factors could have contributed to risk of infection. Update the plan as needed to prevent further cases.
- Implement the necessary processes and protocols when a workplace has an outbreak, in accordance with [CDPH guidelines](#).
- Identify individuals who have been in close contact (within six feet for 15 minutes or more) of an infected person and take steps to isolate the COVID-19 positive person(s) and close contacts. *Refer to Section 10 for more detail.*
- Adhere to these guidelines. Failure to do so could result in workplace illnesses that may cause classrooms or the entire school to be temporarily closed or limited.
- Evaluate whether, and to what extent, external community organizations can safely utilize the site and campus resources. When doing so, SVUSD will require external community organizations that use the facilities also follow this guidance.
- SVUSD will develop a plan for the possibility of repeated closures of classes, groups or entire facilities when persons associated with the facility or in the community become ill with COVID-19. *Refer to Section 10.*

- SVUSD will develop a plan to further support students with access and functional needs who may be at increased risk of becoming infected or having unrecognized illness due to COVID-19. For example, review existing student health plans to identify students who may need additional accommodations, develop a process for engaging families for potentially unknown concerns that may need to be accommodated or identify additional preparations for classroom and non-classroom environments as needed.

Groups who might be at increased risk of becoming infected or having unrecognized illness include the following:

- Individuals who have limited mobility or require prolonged and close contact with others, such as direct support providers and family members;
- Individuals who have trouble understanding information or practicing preventive measures, such as hand washing and physical distancing; and
- Individuals who may not be able to communicate symptoms of illness.

SVUSD has reviewed the [CDPH Guidance for the Use of Face Coverings](#) and applicable local health department guidance.

Exemptions: Face-covering use for students and all staff.

Some flexibility may be needed for younger children consistent with child development recommendations. *Refer to Section 3 for more information.*

Individuals exempted from face covering requirements include:

- 1) Anyone who has trouble breathing, is unconscious, incapacitated, or otherwise unable to remove the covering without assistance.
- 2) Students with extraordinary needs who are unable to tolerate a face covering or present developmental, behavioral or medication contraindications, which have been documented.
- 3) Staff that require respiratory protection according to Cal/OSHA standards or their medical provider.



2. Promote Healthy Hygiene Practices

SVUSD will teach and reinforce [washing hands](#), avoiding [contact with one's eyes, nose, and mouth](#), and [covering coughs and sneezes](#) among students and staff. Additionally,

- Teach students and remind staff to use tissue to wipe their nose and to cough/sneeze inside a tissue or their elbow.
- Remind students and staff to wash their hands frequently throughout the day, including before and after eating; after coughing or sneezing; after classes where they may handle shared items, such as outside recreation, art, or shop; and before and after using the restroom.
- Wash hands for 20 seconds with soap, rubbing thoroughly after application. Soap products marketed as “antimicrobial” are not necessary or recommended.
- Ensure staff will model and practice handwashing and reinforce healthy habits.
- Remind students and staff to use fragrance-free hand sanitizer when handwashing is not practicable. Sanitizer must be rubbed into hands until completely dry. Note: frequent handwashing is more effective than the use of hand sanitizers.
- Make available, Ethyl alcohol-based hand sanitizers as students may not always be supervised during this process.
 - Isopropyl hand sanitizers are more toxic when ingested or absorbed in skin.
 - Do not use hand sanitizers that may [contain methanol](#) which can be hazardous when ingested or absorbed.
- Remind staff that children under age 9 should only use hand sanitizer under adult supervision. Call Poison Control if consumed: 1-800-222-1222.
- SVUSD will investigate the feasibility of portable handwashing stations throughout a site and near classrooms to minimize movement and congregations in bathrooms to the extent practicable.
- SVUSD shall develop routines enabling students and staff to regularly wash their hands at staggered intervals.
- Supplies to support healthy hygiene behaviors will be readily accessible, including soap, tissues, face coverings, and hand sanitizers with at least 60 percent ethyl alcohol for staff and children who can safely use hand sanitizer.
- SVUSD will provide staff and students with face coverings and personal protective equipment

- [CDPH Guidance](#) will be made available to SVUSD staff and families for information regarding the Use of Face Coverings, which discusses the circumstances in which face coverings must be worn and the exemptions, as well as any policies, work rules, and practices adopted to ensure the use of face coverings.
- SVUSD will ensure staff use face coverings in accordance with CDPH guidelines and all required protective equipment.
- As recommend by the Department of Public Health, staff and students are encouraged to be immunized each autumn against influenza unless contraindicated by personal medical conditions, to help:
 - Protect the school community
 - Reduce demands on health care facilities
 - Decrease illnesses that cannot be readily distinguished from COVID-19 and would therefore trigger extensive measures from the school and public health authorities.
- Nothing in this guidance should be interpreted as restricting access to appropriate educational services.



3. Face Coverings

Face coverings must be used in accordance with [CDPH guidelines](#) unless a person is exempt as explained in the guidelines, particularly in indoor environments, on school buses, and areas where physical distancing alone is not sufficient to prevent disease transmission.

- Teach and reinforce the proper use of [face coverings](#).
- Students and staff should be frequently reminded not to touch the face covering and to [wash their hands](#) frequently.
- Follow [proper use, removal, and washing of cloth face coverings](#).
- Face coverings are required for students in grades 3-12.
- Face coverings are strongly encouraged for students in grades TK/K-2.
- Face coverings may be removed for eating, drinking, and outside activities while maintaining physical distancing of six feet.
- All students riding the bus are required to use face coverings.
- Staff may remove face coverings when alone in a classroom or outside without students present.
- Students and staff exempted from wearing a face covering will be required to wear a non-restrictive alternative.

STUDENTS

Age	Face Covering Requirement
Under 2 years old	No
2 years old – 2 nd grade	Strongly encouraged**
3 rd grade – High School	Yes, unless exempt

**Face coverings are strongly encouraged for young children between two years old and second grade, if they can be worn properly. A face shield is an acceptable alternative for children in this cohort who cannot wear them properly.

- Persons younger than two years old, anyone who has trouble breathing, anyone who is unconscious or incapacitated, and anyone who is otherwise unable to remove the face covering without assistance are exempt from wearing a face covering.
- A cloth face covering, or face shield, should be removed for meals, snacks, naptime, or outdoor recreation, or when it needs to be replaced. When a cloth face covering is temporarily removed, it should be placed in a clean paper bag (marked with the student's name and date) until it needs to be put on again.
- In order to comply with this guidance, schools must exclude students from campus if they are not exempt from wearing a face covering under CDPH guidelines and refuse to wear one provided by the school. Distance learning is the appropriate option.
- To prevent unnecessary exclusions, a face covering will be provided to students who inadvertently fail to bring a face covering to school.

STAFF

- All staff must use face coverings in accordance with [CDPH guidelines](#) unless Cal/OSHA standards require respiratory protection.
- In limited situations where a face covering cannot be used for pedagogical or developmental reasons, (i.e. communicating or assisting young children or those with special needs) a face shield can be used instead of a cloth face covering while in the classroom as long as the wearer maintains physical distance from others, to the extent practicable. Staff must return to wearing a face covering outside of the classroom.
- Staff, employees or other persons handling or serving food must use gloves in addition to face coverings.



4. **Ensure Teacher and Staff Safety**

- Supervisors will ensure that staff maintain physical distancing from each other as physical distancing is critical to reducing transmission between adults.
- Supervisors will ensure that all staff use face coverings in accordance with CDPH guidelines and Cal/OSHA standards.
- SVUSD will support staff who are at higher risk for severe illness or who cannot safely distance from household contacts at higher risk, by providing options such as telework, where appropriate, or teaching in a distance learning environment.
- SVUSD will encourage all staff meetings, professional development training and education, and other activities involving staff with physical distancing measures in place, or virtually, where physical distancing is a challenge.
- SVUSD will encourage minimizing the use of and congregation of adults in staff rooms, break rooms, and other settings.
- SVUSD will implement procedures for daily self-monitoring and screening for staff.

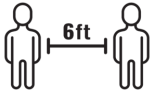


5. **Intensify Cleaning, Disinfection, & Ventilation**

- While drinking fountains will be disabled, hydration stations will be operational, and staff and students are encouraged to use fillable water containers for their hydration needs.
- Trained custodial staff shall [clean and disinfect](#) frequently-touched surfaces frequently at school during the day and on school buses at least daily and, as practicable.
- Buses will be thoroughly cleaned and disinfected daily and after transporting any individual who is exhibiting symptoms of COVID-19. Drivers shall be provided disinfectant wipes and disposable gloves to support disinfection of frequently touched surfaces.
- Frequently touched surfaces in the school include, but are not limited to:
 - Door handles
 - Light switches
 - Sink handles
 - Bathroom surfaces
 - Tables
 - Student Desks
 - Chairs

- Every attempt will be made to limit use and sharing of objects and equipment, such as educational manipulatives, games, art supplies and playground equipment to the extent practicable. When shared use is allowed, staff shall clean and disinfect between uses.
- When choosing disinfecting products, SVUSD staff shall use those approved for use against COVID-19 on the [Environmental Protection Agency \(EPA\)-approved list “N”](#) and follow product instructions. Further, SVUSD shall endeavor to
 - [Reduce the risk of asthma](#) and other health effects related to disinfecting, programs should select disinfectant products on list N with asthma-safer ingredients (hydrogen peroxide, citric acid or lactic acid) as recommended by the US EPA Design for Environment program.
 - Avoid products that contain peroxyacetic (peracetic) acid, sodium hypochlorite (bleach) or quaternary ammonium compounds, which can cause asthma.
 - Follow label directions for appropriate dilution rates and contact times. Provide workers training on the chemical hazards, manufacturer’s directions, Cal/OSHA requirements for safe use, and as applicable and as required by the Healthy Schools Act.
 - Custodial staff and any other workers who clean and disinfect the school site must be equipped with proper protective equipment, including gloves, eye protection, respiratory protection, and other appropriate protective equipment as required by the product instructions. All products must be kept out of children’s reach and stored in a space with restricted access.
 - Establish a cleaning and disinfecting schedule in order to avoid both under- and over-use of cleaning products.
 - Ensure safe and correct application of disinfectant and keep products away from students.
 - SVUSD will ensure proper ventilation during cleaning and disinfecting. Introduce fresh outdoor air as much as possible, for example, by opening windows where practicable.
 - When cleaning, spaces will be aired out before children arrive and thoroughly cleaning when children are not present. If using air conditioning, use the setting that brings in outside air. Replace and check air filters and filtration systems to ensure optimal air quality.
 - Investigate the feasibility of portable high-efficiency air cleaners, upgrading the building’s air filters to the highest efficiency possible, and making other modifications to increase the quantity of outside air and ventilation in classrooms, offices and other spaces.

- SVUSD shall [take steps](#) to ensure that all water systems and features (for example, hydration stations) are safe to use after a prolonged facility shutdown to minimize the risk of [Legionnaires' disease](#) and other diseases associated with water.



6. Implementing Distancing Inside & Outside the Classroom



Arrival and Departure

- Minimize contact at school between students, staff, families and the community at the beginning and end of the school day. Prioritize minimizing contact between adults at all times.
- Designate routes for entry and exit when feasible. Put in place other protocols to limit direct contact with others as much as practicable.
- Every student and staff member are required to perform self-monitoring and health screenings prior to arrival at school or prior to boarding the school bus, whichever comes first. *Refer to section 9.*

When using district provided student transportation:

- Bus drivers and all students are required to wear face coverings when using the school bus.
- Students will be in assigned seating when practicable.
- Maximize space between the driver and students on school buses. Leave the seat directly behind the driver empty.
- No more than 2 students per seat, preferably with siblings/family members.
- Ensure each bus is equipped with extra unused face coverings on school buses for students who may have inadvertently failed to bring one.
- Open windows to the greatest extent practicable.
- Parents are strongly encouraged to have their children use a hand sanitizer before boarding.



Classroom Space

- To reduce possibilities for infection, students must remain in the same space and in cohorts as small and consistent as practicable, including for recess and lunch. Keep the same students and teacher or staff with each group, to the greatest extent practicable.
- Prioritize the use and maximization of outdoor space for activities where practicable.
- Minimize movement of students and teachers or staff as much as practicable. For example, consider ways to keep teachers with one group of students for the whole day. In secondary schools or in situations where students have individualized schedules, plan for ways to reduce mixing among cohorts and to minimize contact.
- Implement block-scheduling at the high school.
- Maximize space between seating and desks. Distance teacher and other staff desks at least six feet away from student desks and establish separation of students through other means if practicable, such as, six feet between desks, where practicable, partitions between desks, markings on classroom floors to promote distancing or arranging desks in a way that minimizes face-to-face contact.
- Redesigning activities for smaller groups and rearranging furniture and play spaces to maintain separation.
- Staff should develop instructions for maximizing spacing and ways to minimize movement in both indoor and outdoor spaces that are easy for students to understand and are developmentally appropriate.
- Activities where there is increased likelihood for transmission from contaminated exhaled droplets such as band and indoor choir practice and performances are not permitted.
- Activities that involve singing must only take place outdoors.
- When turning in assignments, minimize contact.
- Consider using privacy boards or clear screens to increase and enforce separation between staff and students, when necessary or wherever practicable.



Non-Classroom Spaces

- Nonessential visitors, volunteers and activities involving other groups at the same time will be limited or temporarily suspended.
- Communal activities will be limited where practicable. Alternatively, stagger use, properly space occupants and disinfect in between uses.
- Use non-classroom space for instruction, including regular use of outdoor space, weather permitting. For example, instruction outside.
- Minimize congregate movement through hallways as much as practicable. For example, establish more ways to enter and exit a campus, create staggered passing times when necessary or when students cannot stay in one room and create guidelines on the floor that students can follow to enable physical distancing while passing. In addition, schools can consider eliminating the use of lockers and moving to block scheduling, which supports the creation of cohort groups and reduces changes of classrooms.
- Serve meals outdoors or in classrooms instead of cafeterias or group dining rooms where practicable. Where cafeterias or group dining rooms must be used, keep students together in their cohort groups, ensure physical distancing, and consider assigned seating. Serve individually plated or bagged meals. Avoid sharing of foods and utensils and buffet or family-style meals.
- Consider holding recess activities in separated areas designated by class.



Sports and Extra Curricular Activities (Updated August 3, 2020)

- Outdoor and indoor sporting events, assemblies, dances, rallies, field trips, and other activities that require close contact or that would promote congregating are not permitted at this time. For example, tournaments, events, or competitions, regardless of whether teams are from the same school or from different schools, counties, or states are not permitted at this time.
- Youth sports and physical education are permitted only when the following can be maintained: (1) physical distancing of at least six feet; and (2) a stable cohort, such as a class, that limits the risks of transmission ([see CDC Guidance on Schools and Cohorting](#)). Activities should take place outside to the maximum extent practicable.
- The Northern Section CIF will not be able to conduct high school athletics until the California Department of Public Health changes these guidelines. “Outdoor and indoor sporting events, assemblies, dances, rallies, field trips, and other activities that require close contact or that would promote congregating are not permitted at this time. For example, tournaments, events, or competitions, regardless of whether teams are from the same school or from different schools, counties, or states are not permitted at this time.” (*Sports and Extra Curricular Activities*, August 3, 2020)

- For sports that cannot be conducted with sufficient distancing or cohorting, only physical conditioning and training is permitted and ONLY where physical distancing can be maintained. Conditioning and training should focus on individual skill building (e.g., running drills and body weight resistance training) and should take place outside, where practicable. Indoor physical conditioning and training is allowed only in counties where gyms and fitness centers are allowed to operate indoors.
- Avoid equipment sharing, and if unavoidable, clean and disinfect shared equipment between use by different people to reduce the risk of COVID-19 spread.
- Consistent with guidance for gyms and fitness facilities, cloth face coverings must be worn during indoor physical conditioning and training or physical education classes (except when showering). Activities that require heavy exertion should be conducted outside in a physically distanced manner without face coverings. Activities conducted inside should be those that do not require heavy exertion and can be done with a face covering. Players should take a break from exercise if any difficulty in breathing is noted and should change their mask or face covering if it becomes wet and sticks to the player's face and obstructs breathing. Masks that restrict airflow under heavy exertion (such as N-95 masks) are not advised for exercise.
- Activities where there is increased likelihood for transmission from contaminated exhaled droplets such as band and choir practice and performances are not permitted.



7. Limit Sharing

- SVUSD will keep each child's belongings separated and in individually labeled storage containers, cubbies or areas. Ensure personal belongings are taken home each day to be cleaned.
- Adequate supplies will be provided to minimize sharing of high-touch materials (art supplies, equipment, for example) to the extent practicable or limit use of supplies and equipment to one group of children at a time and clean and disinfect between uses.
- As practicable, sharing electronic devices, clothing, toys, books and other games or learning aids should be avoided. Where sharing occurs, clean and disinfect between uses.
- Chromebooks will be assigned to and checked-out to students.



8. Train All Staff and Educate Families

All staff will be trained, and families will receive information about the following safety actions:

- Enhanced sanitation practices.
- Physical distancing guidelines and their importance.
- The importance of wearing and using a face covering.
- The proper use, removal, and washing of face coverings.
- Screening practices.
- How COVID-19 is spread.
- COVID-19 specific [symptom](#) identification.
- Preventing the spread of COVID-19 if sick, including the importance of not coming to work if staff members have symptoms, or if they or someone they live with has been diagnosed with COVID- 19.
- For workers, COVID-19 specific [symptom](#) identification and when to seek medical attention.
- When conducting trainings, ensure a minimum of six-foot distancing is maintained.
- At minimum, this Framework will be posted to the SVUSD public facing webpage and the district's Facebook page.



9. Check for Signs and Symptoms

SVUSD will not tolerate discrimination against students who (or whose families) or staff (or whose families) are diagnosed with COVID-19 or who are perceived to be a COVID-19 risk.

Any student or school staff member with a temperature of 100.4 °F or greater, regardless of other symptoms will be excluded from the school site until they either present proof of a negative COVID 19 test, or 10 days have passed since the fever or other symptoms began, and at least 3 days have passed without a fever (without the use of fever reducing medications) and respiratory symptoms (coughing, shortness of breath) have resolved.

School staff or students **who are in close contact** with anyone who is **COVID-19 positive** or has a fever of 100.4, even if not tested, will be excluded from school for 14 days from their last exposure to the ill person. Persons living in the same household will be excluded from school for 14 additional days after the ill person has recovered.

- Sick staff and students deserve to stay home without fear of reprisal.
- SVUSD will implement passive screening and other procedures for all staff and students entering the campus/building unless it becomes necessary to implement active screening as a result of an order by the authorities.
- Visual wellness checks of all students will be conducted at school and they may be asked, as appropriate, whether anyone in their home is exhibiting [COVID-19 symptoms](#).
- Hand-washing times will be scheduled, and hand sanitizer will be provided.
- If a student is exhibiting symptoms of COVID-19, staff shall communicate with the parent/guardian/caregiver.
- Staff will document/track incidents of possible exposure and notify local health officials, staff and families immediately of any exposure to a positive case of COVID-19 at school while maintaining confidentiality, as required under FERPA and state law related to privacy of educational records. Additional guidance can be found in Attachment “F” [here](#). As noted in Section 11 below, the staff liaison shall serve a coordinating role to ensure prompt and responsible notification.
- If throughout the school day, staff and students exhibit signs of illness, it will be standard operating procedure to students and staff home with a fever of 100.4 degrees or higher, cough or other [COVID-19 symptoms](#).
- Students and staff will not be penalized for missing class or work.
- COVID-19 Screening Flow Chart is attached.
- COVID-19 Exposure Screening Flow Chart is attached.
- COVID-19 Now What Flow Chart is attached.



10. When Staff, a Child or Visitor Becomes Sick

- Each school will have an isolation room or area to separate anyone who exhibits symptoms of COVID-19.
- Any students or staff exhibiting symptoms should immediately be required to wear a face covering, if not already wearing one, and be required to wait in an isolation area until they can be transported home or to a healthcare facility, as soon as practicable.
- Supervised transport home or to a healthcare facility, as appropriate, when an individual is exhibiting COVID-19 symptoms:
 - Fever
 - Cough
 - Shortness of breath or difficulty breathing
 - Chills
 - Repeated shaking with chills
 - Fatigue
 - Muscle pain
 - Headache
 - Sore throat
 - Congestion or runny nose
 - Nausea or vomiting
 - Diarrhea
 - New loss of taste or smell
 - For serious injury or illness, call 9-1-1 without delay. Seek medical attention if COVID-19 symptoms become severe, including persistent pain or pressure in the chest, confusion, or bluish lips or face. Updates and further details are available on [CDC's webpage](#).
 - Notify local health officials immediately of any positive case of COVID-19, and exposed staff and families as relevant while maintaining confidentiality as required by state and federal laws. Additional guidance can be found [here](#).
 - Close off areas used by any individual suspected of being infected with the virus that causes COVID-19 and do not use before cleaning and disinfection. To reduce risk of exposure, wait 24 hours before you [clean and disinfect](#). If it is not possible to wait 24 hours, wait as long as practicable. Ensure a [safe and correct application](#) of disinfectants using personal protective equipment and ventilation recommended for cleaning. Keep disinfectant products away from students.

- Advise sick staff members and students not to return until they have met CDC criteria to discontinue [home isolation](#), including at least 3 days with no fever, symptoms have improved and at least 10 days since symptoms first appeared.
- Ensure that students, including students with disabilities, have access to instruction when out of class, as required by federal and state law.
- Distance learning is an advisable option based on the unique circumstances of each student who would be put at-risk by an in-person instructional model. For example, students with a health condition, students with family members with a health condition, students who cohabit or regularly interact with high-risk individuals, or are otherwise identified as “at-risk” by the parents or guardian, students who cannot tolerate a face covering, are students whose circumstances merit receiving distance learning.
- Implement the necessary processes and protocols when a school has an outbreak, in accordance with [CDPH guidelines](#).
- Investigate the COVID-19 illness and exposures and determine if any work-related factors could have contributed to risk of infection.
- Update protocols as needed to prevent further cases. See the CDPH guidelines, [Responding to COVID-19 in the Workplace](#), which are incorporated into this guidance and contain detailed recommendations for establishing a plan to identify cases, communicating with workers and other exposed persons, and conducting and assisting with contact tracing.



11. Maintain Healthy Operations

- As always, staff absenteeism shall be monitored, and a roster of trained back-up staff will be available.
- The types of illnesses and symptoms will be monitored among students and staff to help isolate them promptly as needed.
- SVUSD will designate a staff liaison or liaisons to be responsible for responding to COVID-19 concerns. Workers shall know who they are and how to contact them. The liaison will be trained to coordinate the documentation and tracking of possible exposure, in order to notify local health officials, staff and families in a prompt and responsible manner.
- Communication systems that allow staff and families to self-report symptoms and receive prompt notifications of exposures will be made available, while maintaining confidentiality, as required by FERPA and state law related to privacy of educational records.
- As a result of a local public health authority's order, it may become necessary to require COVID-19 testing. The role of providing routine systematic testing of staff or students for COVID-19 (e.g., PCR swab testing for acute infection, or presence of antibodies in serum after infection) is currently being reviewed.
- A distance learning option will be implemented to support students who are at higher risk for severe illness, unable to or choose not to wear a face covering, or who cannot safely distance from household contacts at higher risk



12. Considerations for Reopening & Partial or Total Closures

Scott Valley Unified School District schools have been dismissed since mid-March 2020 due to the COVID-19 pandemic. School closures to in-person instruction were part of a broader set of recommendations intended to reduce transmission of SARS-CoV-2, the virus that causes COVID-19. For more detailed direction on measures to be taken when a student, teacher, or staff member has symptoms or is diagnosed with COVID-19, please see the [COVID-19 and Reopening Framework for K-12 Schools in California](#).

- SUVSD will check State and local orders and health department notices daily about transmission in the area or closures and adjust operations accordingly.
- When a student, teacher or staff member tests positive for COVID-19 and had exposed others at the school, refer to the [CDPH Framework for K-12 Schools](#), and implement the following steps:
- In consultation with the local public health department, the appropriate school official should ensure cleaning and quarantine of exposed persons and whether any additional intervention is warranted, including the length of time necessary, based on the risk level within the specific community as determined by the local public health officer.
- Close off the classroom or office where the patient was based and do not use these areas until after cleaning and disinfection. Wait at least 24 hours before cleaning and disinfecting. If 24 hours is not feasible, wait for at least two hours and as long as possible.
- Additional areas of the school visited by the COVID-19 positive individual may also need to be cleaned and disinfected.
- Implement communication plans for exposure at school and potential school closures to include outreach to students, parents, teachers, staff and the community.
- Information for staff regarding labor laws, information regarding Disability Insurance, Paid Family Leave and Unemployment Insurance, as applicable to schools. See additional [information on government programs supporting sick leave and worker's compensation for COVID-19](#), including worker's sick leave rights under [the Families First Coronavirus Response Act](#) and employee's rights to workers' compensation benefits and presumption of the work-relatedness of COVID-19 pursuant to the Governor's Executive Order N-62-20, while that Order is in effect, is available by contacting the Office of Human Resources.
- SVUSD reminds students, staff and families of the importance of community physical distancing measures while a school is closed and discourages students or staff from gathering elsewhere.

The Scott Valley Unified School District will ensure strict and faithful adherence to [COVID-19 and Reopening Framework for K-12 Schools in California](#).

The COVID-19 and Reopening Framework for K-12 Schools in California, 2020-2021 School Year (California Department of Public Health, July 17, 2020) is attached to this Framework.

Scott Valley Unified School District
Instructional Models Adopted by the Board of Trustees, August 10, 2020
Effective August 26, 2020 through October 23, 2020*

Siskiyou County is not on and has not been on the state monitoring list, therefore, SVUSD will offer two models of instruction:

- I. In-person instruction, to the greatest extent possible
- II. Distance Learning

Students will attend school following their school's respective minimum day schedule. Teachers will adhere to a professional work-day schedule.

When students are not in school or attending school online, teachers will meet with other teachers or administration to collaborate, align lessons and pacing for students in distance learning models, review assessments and adjust lessons and pacing, design lessons to meet the needs of all learners, hold office hours for students needing extra-help or tutoring, or schedule meetings with parents to report progress on a frequent basis, and attend to other educational, professional duties. All teachers are expected to follow their assigned work hours in both settings: in-person or distance learning.

Frequent and on-going evaluation with site teams and principals is essential to ensure that all students have access and receive a robust educational program that supports a successful transition to the upcoming grade level, ultimately culminating in successful high school graduation, equipped and prepared for post-secondary success.

*Subject to local and state public health closures.

SVUSD Etna and Fort Jones Preschool 2020-21 First Quarter Reopening Plan

Students will attend the site in which they are enrolled for in person learning.

In-Person start date Wednesday August 26, 2020

Distance Learning start date Monday August 31, 2020

- **Fort Jones** students attend Fort Jones Preschool- Monday and Tuesday.
- Operating hours are 8am-11:30am. Doors open at 7:50am.
- Limited classroom occupancy due to social distancing requirements.
- General wellness checks and temperatures will be taken daily before entering the school building per Child Care Programs Covid-19 Guidelines.
- Distance learning will be offered to students Wednesday and Thursday.

- **Etna** students attend Etna Elementary Preschool-Wednesday & Thursday.
- Operating hours are 8:30am-12 noon. Doors open at 8:20am.
- Limited classroom occupancy due to social distancing requirements.
- General wellness checks and temperatures will be taken daily before entering the school building per Child Care Programs Covid-19 Guidelines.
- Distance learning will be offered to students Monday and Tuesday.

- Fridays-all students in distance learning. Staff will prepare distance learning for the following week including take home activities, classroom prep and sanitizing classroom manipulatives. Opportunities for the parents to come and pick up needed materials for the following week to enhance learning during open hours. This would allow opportunities to meet with parents if needed and provide extra support to students.

Distance Learning:

- Daily contact with students.
- Staff will conduct at least 15-minute Google Meets with students Monday-Thursday.
- Staff will implement theme based Early Childhood curriculum in coordination with in-person learning.

Should school closures become mandated, transitioning to full distance learning would have less impact

*Subject to local and state public health closures.



SONIA Y. ANGELL, MD, MPH
State Public Health Officer & Director

State of California—Health and Human Services Agency
California Department of Public Health



GAVIN NEWSOM
Governor

**COVID-19 and Reopening In-Person Learning
Framework for K-12 Schools in California, 2020-2021 School Year**

July 17, 2020

Overview

California schools have been closed for in-person instruction since mid-March 2020 due to the COVID-19 pandemic. School closures to in-person instruction were part of a broader set of recommendations intended to reduce transmission of SARS-CoV-2, the virus that causes COVID-19. CDPH developed the following framework to support school communities as they decide when and how to implement in-person instruction for the 2020-2021 school year. New evidence and data about COVID-19 transmission, including variations by age, and the effectiveness of disease control and mitigation strategies continues to emerge regularly. Recommendations regarding in-person school reopening and closure should be based on the available evidence as well state and local disease trends.

The CA [School Sector Specific Guidelines](#), and the Centers for Disease Control and Prevention [CDC](#) have published additional guidance on school re-entry.

In-Person Re-Opening Criteria

Schools and school districts may reopen for in-person instruction at any time if they are located in a local health jurisdiction (LHJ) that has not been on the county¹ monitoring list within the prior 14 days.

If the LHJ has been on the monitoring list within the last 14 days, the school must conduct distance learning only, until their LHJ has been off the monitoring list for at least 14 days.²

¹ School districts in LHJs that are cities are considered to be included as part of the county if the county is on the monitoring list.

² A waiver of this criteria may be granted by the local health officer for elementary schools to open for in-person instruction. A waiver may only be granted if one is requested by the superintendent (or equivalent for charter or private schools), in consultation with labor, parent and community organizations. Local health officers must review local community epidemiological data, consider other public health interventions, and consult with CDPH when considering a waiver request.



SONIA Y. ANGELL, MD, MPH
State Public Health Officer & Director

State of California—Health and Human Services Agency California Department of Public Health



GAVIN NEWSOM
Governor

Guidance Once Re-Opened to In-Person Instruction

How should schools think about testing?

Once schools are re-opened to at least some in-person instruction, it is recommended that surveillance testing be implemented based on the local disease trends. If epidemiological data indicates concern for increasing community transmission, schools should increase testing of staff to detect potential cases as lab testing capacity allows.

Who should be tested and how often?

School staff are essential workers, and staff includes teachers, para-professionals, cafeteria workers, janitors, bus drivers, or any other school employee that may have contact with students or other staff. School districts and schools shall test staff periodically, as testing capacity permits and as practicable. Examples of recommended frequency include testing all staff over 2 months, where 25% of staff are tested every 2 weeks, or 50% every month to rotate testing of all staff over time.

What if a school or school district reopens to in-person instruction, but the county is later placed on the county monitoring list?

Schools should begin testing staff, or increase frequency of staff testing but are not required to close.





SONIA Y. ANGELL, MD, MPH
State Public Health Officer & Director

State of California—Health and Human Services Agency
California Department of Public Health



GAVIN NEWSOM
Governor

What measures should be taken when a student, teacher or staff member has symptoms, is a contact of someone infected, or is diagnosed with COVID-19?

	Student or Staff with:	Action	Communication
1.	COVID-19 Symptoms (e.g., fever, cough, loss of taste or smell, difficulty breathing) Symptom Screening: Per CA School Sector Specific Guidelines	<ul style="list-style-type: none"> Send home Recommend testing (If positive, see #3, if negative, see #4) School/classroom remain open 	<ul style="list-style-type: none"> No Action needed
2.	Close contact (+) with a confirmed COVID-19 case	<ul style="list-style-type: none"> Send home Quarantine for 14 days from last exposure Recommend testing (but will not shorten 14-day quarantine) School/classroom remain open 	<ul style="list-style-type: none"> Consider school community notification of a known contact
3.	Confirmed COVID-19 case infection	<ul style="list-style-type: none"> Notify the local public health department Isolate case and exclude from school for 10 days from symptom onset or test date Identify contacts (+), quarantine & exclude exposed contacts (likely entire cohort (++)) for 14 days after the last date the case was present at school while infectious Recommend testing of contacts, prioritize symptomatic contacts (but will not shorten 14-day quarantine) Disinfection and cleaning of classroom and primary spaces where case spent significant time School remains open 	<ul style="list-style-type: none"> School community notification of a known case
4.	Tests negative after symptoms	<ul style="list-style-type: none"> May return to school 3 days after symptoms resolve School/classroom remain open 	<ul style="list-style-type: none"> Consider school community notification if prior awareness of testing





SONIA Y. ANGELL, MD, MPH
State Public Health Officer & Director

State of California—Health and Human Services Agency California Department of Public Health



GAVIN NEWSOM
Governor

(†) A contact is defined as a person who is <6 feet from a case for >15 minutes. In some school situations, it may be difficult to determine whether individuals have met this criterion and an entire cohort, classroom, or other group may need to be considered exposed, particularly if people have spent time together indoors.

(††) A cohort is a stable group with fixed membership that stays together for all courses and activities (e.g., lunch, recess, etc.) and avoids contact with other persons or cohorts.

Guidance on School Closure

What are the criteria for closing a school?

Individual school closure is recommended based on the number of cases, the percentage of the teacher/students/staff that are positive for COVID-19, and following consultation with the Local Health Officer. Individual school closure may be appropriate when there are multiple cases in multiple cohorts at a school or when at least 5 percent of the total number of teachers/student/staff are cases within a 14-day period, depending on the size and physical layout of the school.

The Local Health Officer may also determine school closure is warranted for other reasons, including results from public health investigation or other local epidemiological data.

If a school is closed for in-person learning, when may it reopen?

Schools may typically reopen after 14 days and the following have occurred:

- Cleaning and disinfection
- Public health investigation
- Consultation with the local public health department

What are the criteria for closing a school district?



State of California—Health and Human Services Agency
California Department of Public Health



SONIA Y. ANGELL, MD, MPH
State Public Health Officer & Director

GAVIN NEWSOM
Governor

A superintendent should close a school district if 25% or more of schools in a district have closed due to COVID-19 within 14 days, and in consultation with the local public health department.

If a school district is closed, when may it reopen?

Districts may typically reopen after 14 days, in consultation with the local public health department.

State Resources for Case, Contact & Outbreak Investigations

California is committed to supporting local health departments with resources and other technical assistance regarding school case, contact, and outbreak investigations.



COVID-19 Exposure Screening Flow Chart

Student or staff share they have been exposed/in close contact, within 6 feet for 15 minutes or greater, with someone who...

has tested positive for COVID-19

is being tested for COVID-19

*Self-quarantine for 14 days from last exposure to COVID-19 contact. Consider COVID-19 testing.
*Contact your health care provider.
*Self-check symptoms COVID-19.
*If COVID-19 positive may return to work when cleared by Public Health.

may have been exposed to COVID-19

*Contact your health care provider
*Practice physical distancing.
*Self-check for COVID-19 symptoms.
*If symptoms appear, get tested for COVID-19.

Signs and Symptoms of COVID-19:

- *Fever 100.4 F
- *Chills
- *Congestion or runny nose
- *Cough
- *Shortness of breath
- *Difficulty Breathing
- *Diarrhea
- *Nausea/Vomiting
- *Fatigue
- *Headache
- *Sore throat
- *Muscle or body aches
- *New loss of taste or smell

Signs and Symptoms of MIS-C:

- *Rash
- *Red eyes
- *Cracked/swollen lips
- *Red/swollen tongue
- *Swelling hands/feet
- *Stomach pain

Has been in close contact with someone who may have been exposed to COVID-19

*Practice physical distancing



COVID-19 Screening Flow Chart

Student or Staff complains of COVID-19 or MIS-C symptoms. Mask student or staff (unless they are having difficulty breathing, if so call 9-1-1).

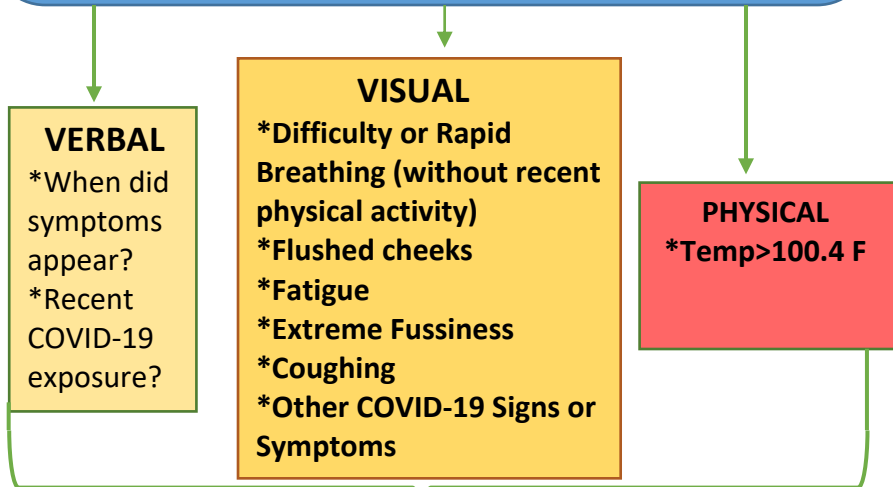
- *Place student in a room away from others;
- *Staff should go home immediately.

Signs and Symptoms of COVID-19:

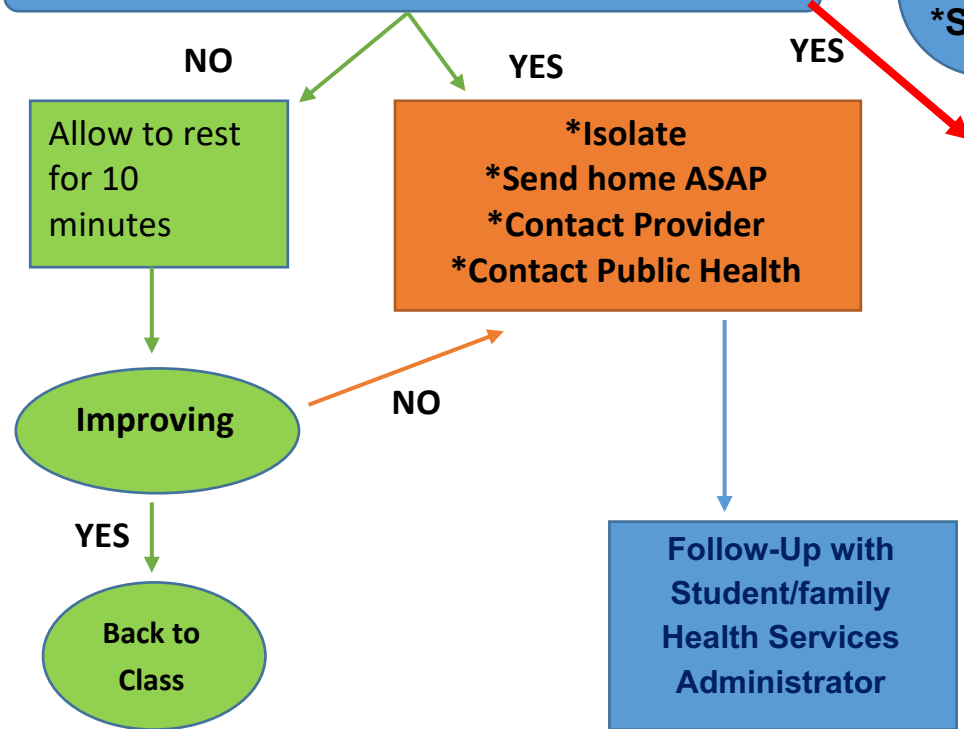
- *Fever 100.4 F
- *Chills
- *Nasal congestion
- *Runny nose
- *Shortness of breath
- *Difficulty Breathing
- *Diarrhea
- *Nausea/Vomiting
- *Fatigue
- *Headache
- *Muscle or body aches
- *New loss of taste or smell

Signs and Symptoms of MIS-C:

- *Rash
- *Red eyes
- *Cracked/swollen lips
- *Red/swollen tongue
- *Swelling hands/feet
- *Stomach pain



Verbal, Visual, & Physical concerns out of range?



Call 9-1-1 (EMS)

- *Trouble Breathing
- *Bluish Lips/Face
- *Chest Pain
- *New Confusion
- *Unable to wake or stay awake



Developed by the California School Nurses Organization. Revised and approved for Siskiyou County Schools by Aaron Stutz, MD, Siskiyou County Public Health Officer (8/6/2020). Subject to change.

COVID-19 Now What Flow Chart

I just found out...

I'm COVID-19 positive

*Self-isolate at home for 10 days from the first day symptoms appeared
Avoid infecting others

May return to work/school when:
-At least 3 days (72 hours) have passed *since recovery* defined as resolution of fever without the use of fever-reducing medications; **and**
-No respiratory symptoms (e.g., cough, shortness of breath); **and**,
-At least 10 days have passed *since COVID-19 symptoms first appeared*.

I've been exposed/had close contact with someone that is COVID-19 positive

* Get COVID-19 Tested by calling your health care provider or by finding a test site.

*Self-quarantine for 14 days from last exposure to COVID-19

*Avoid infecting others in case you are COVID-19 Positive

You may return to work/school:
-After 14 days have passed since your COVID-19 exposure
-If you test positive see measures on the column to the left entitled "I'm COVID-19 Positive."

I may have been exposed to someone with COVID-19

See the "COVID-19 Possible Exposure Worksheet"

Signs and Symptoms of COVID-19:

- *Fever 100.4 F
- *Chills
- *Congestion or runny nose
- *Cough
- *Shortness of breath
- *Difficulty Breathing
- *Diarrhea
- *Nausea/Vomiting
- *Fatigue
- *Headache
- *Sore throat
- *Muscle or body aches
- *New loss of taste or smell

Signs and Symptoms of MIS-C:

- *Rash
- *Red eyes
- *Cracked/swollen lips
- *Red/swollen tongue
- *Swelling hands/feet
- *Stomach pain

***Health Care Provider may include:**
-Physician or Surgeon
-Physician's Assistant
-Nurse Practitioner

